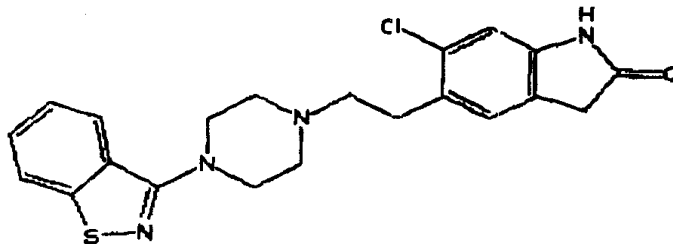


# Ziprasidone (Zeldox®, Geodon®)

## Structure:



**Manufacturer:** Pfizer, USA

**FDA Status:** -July, 2000 - Advisory Committee to the FDA recommended approval  
-July, 1998 - Approved in Sweden

**CAS registry No.:** 146939-27-7 (free base)

**Chemical Name:** 5-(2-(4-(1,2-Benzisothiazol-3-yl)piperazin-1-yl)ethyl)-6-chloroindolin-2-one hydrochloride hydrate

OR

2H-Indol-2-one,5-[2-[4-(1,2-benzisothiazol-3-yl)-1-piperazinyl]ethyl]-6-chloro-1,3-dihydro-

**Molecular formula:** C<sub>21</sub>H<sub>21</sub>ClN<sub>4</sub>OS

**Molecular weight:** 412.949

## Therapeutic

**Category:** -Neuroleptic, Atypical anti-psychotic for Schizophrenia  
-High affinity and selectivity for dopamine and serotonin receptors  
-Reduced sedative behavior compared to Haloperidol and Risperidone

**Bio-availability:** Oral - 60%

**Protein Binding:** Greater than 99%

## Volume of

**Distribution (V<sub>d</sub>):** 2.3 L/kg

**Metabolism:** -Extensively metabolized in liver  
-Mild-to-moderate impairment of renal function has minimal effect

**Half-Life (T<sub>1/2</sub>):** 4-5 hours