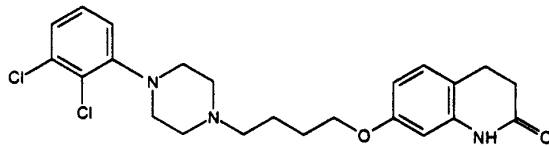


**NEW DRUGS: Aripiprazole (Abilify®)**

Submitted by D. Anderson, Los Angeles County Dept. of Coroner



- Atypical Antipsychotic: Effective against both the positive and negative symptoms of schizophrenia
- Manufactured by Bristol-Myers Squibb Co. in association with Otsuka Pharmaceutical CO. Ltd. (1999)
  - Tablets: 10, 15, 20 & 30 mg
- FDA Approval Letter - Nov. 15, 2002
- Quinolinone Derivative
- Structure



$C_{23}H_{27}Cl_2N_3O_2$   
MW=448



- pKa = ??
- Pharmacology
  - Dopamine D2 receptors
  - Presynaptic agonist
  - Postsynaptic antagonist
  - Affects the 5-HT Receptors
    - Antagonist at 5-HT<sub>2A</sub>
    - Partial agonist at 5-HT<sub>1A</sub>
- T<sub>1/2</sub> 46.6 hrs
- Vd 4.9 L/kg
- Levels

**Clinical Study**

Titrated Dose	Time (days)	Cmax (mg/L)
10 mg/day	2	---
20 mg/day	2	---
30 mg/day	10	0.452 on day 14

- Adverse Effects: Sleepiness, headache, dullness, dizziness & insomnia.
  - Minimal sedation & weight gain.
- Similar to other Atypical Antipsychotics such as
 

Clozapine	Quetiapine	Olanzapine
Risperidone	Ziprasidone	